

# Traffic Statistics - December 2017



[hamburg-airport.de](http://hamburg-airport.de)

	December			January - December			12 months to date	
	2017	2016	% change	2017	2016	% change		%
<b>Passengers</b>								
Total (commercial)	<b>1.203.551</b>	1.196.374	+ 0,6	<b>17.622.997</b>	16.223.918	+ 8,6		+ 8,6
Volume	<b>1.200.649</b>	1.194.544	+ 0,5	<b>17.592.278</b>	16.194.176	+ 8,6		+ 8,6
Scheduled and charter traffic	<b>1.199.892</b>	1.193.904	+ 0,5	<b>17.579.934</b>	16.181.549	+ 8,6		+ 8,6
other commercial traffic	<b>757</b>	640	+ 18,3	<b>12.344</b>	12.627	- 2,2		- 2,2
Transit	<b>2.902</b>	1.830	+ 58,6	<b>30.719</b>	29.742	+ 3,3		+ 3,3
<b>Aircraft movements</b>								
Total	<b>10.892</b>	11.735	- 7,2	<b>159.780</b>	160.642	- 0,5		- 0,5
Commercial traffic	<b>10.099</b>	10.846	- 6,9	<b>146.024</b>	145.265	+ 0,5		+ 0,5
Scheduled and charter traffic	<b>9.853</b>	10.643	- 7,4	<b>142.243</b>	140.839	+ 1,0		+ 1,0
of which cargo	<b>42</b>	49	- 14,3	<b>601</b>	624	- 3,7		- 3,7
Other commercial traffic	<b>246</b>	203	+ 21,2	<b>3.781</b>	4.426	- 14,6		- 14,6
Non-commercial traffic	<b>793</b>	889	- 10,8	<b>13.756</b>	15.377	- 10,5		- 10,5
<b>Seating capacity</b>								
Commercial traffic	<b>1.598.741</b>	1.636.020	- 2,3	<b>22.695.149</b>	21.227.193	+ 6,9		+ 6,9
Scheduled and charter traffic	<b>1.596.257</b>	1.634.156	- 2,3	<b>22.662.619</b>	21.191.642	+ 6,9		+ 6,9
<b>MTOM (in t total)</b>								
Total	<b>748.930</b>	770.612	- 2,8	<b>10.580.797</b>	10.027.690	+ 5,5		+ 5,5
Commercial traffic	<b>733.291</b>	754.995	- 2,9	<b>10.350.937</b>	9.814.885	+ 5,5		+ 5,5
Scheduled and charter traffic	<b>730.719</b>	753.438	- 3,0	<b>10.325.053</b>	9.788.120	+ 5,5		+ 5,5
<b>Cargo (t)</b>								
Air cargo total (t)	<b>7.009</b>	5.568	+ 25,9	<b>74.948</b>	65.557	+ 14,3		+ 14,3
Cargo transshipment total	<b>6.995</b>	5.568	+ 25,6	<b>74.927</b>	65.547	+ 14,3		+ 14,3
Aircraft cargo transshipment	<b>3.118</b>	3.092	+ 0,9	<b>36.863</b>	35.284	+ 4,5		+ 4,5
Road cargo transshipment	<b>3.876</b>	2.475	+ 56,6	<b>38.064</b>	30.259	+ 25,8		+ 25,8
Total unloaded	<b>4.161</b>	2.515	+ 65,5	<b>38.468</b>	32.571	+ 18,1		+ 18,1
Total loaded	<b>2.834</b>	3.053	- 7,2	<b>36.461</b>	32.975	+ 10,6		+ 10,6
Transit	<b>15</b>	0	+	<b>22</b>	8	+ 175,0		+ 175,0
<b>Key ratios</b>								
Load factor – passenger traffic	<b>75,5</b>	73,2	+ 2,2 PP	<b>77,8</b>	76,6	+ 1,2 PP		+ 1,2 PP
Scheduled and charter traffic	<b>75,5</b>	73,3	+ 2,2 PP	<b>77,8</b>	76,6	+ 1,2 PP		+ 1,2 PP
Passengers / aircraft movement	<b>120,0</b>	111,0	+ 8,1	<b>121,4</b>	112,4	+ 8,0		+ 8,0
Scheduled and charter traffic	<b>122,9</b>	113,0	+ 8,7	<b>124,5</b>	115,8	+ 7,5		+ 7,5
MTOM / commercial traffic	<b>72,6</b>	69,6	+ 4,3	<b>70,9</b>	67,6	+ 4,9		+ 4,9
Scheduled and charter traffic	<b>74,2</b>	70,8	+ 4,8	<b>72,6</b>	69,5	+ 4,4		+ 4,4

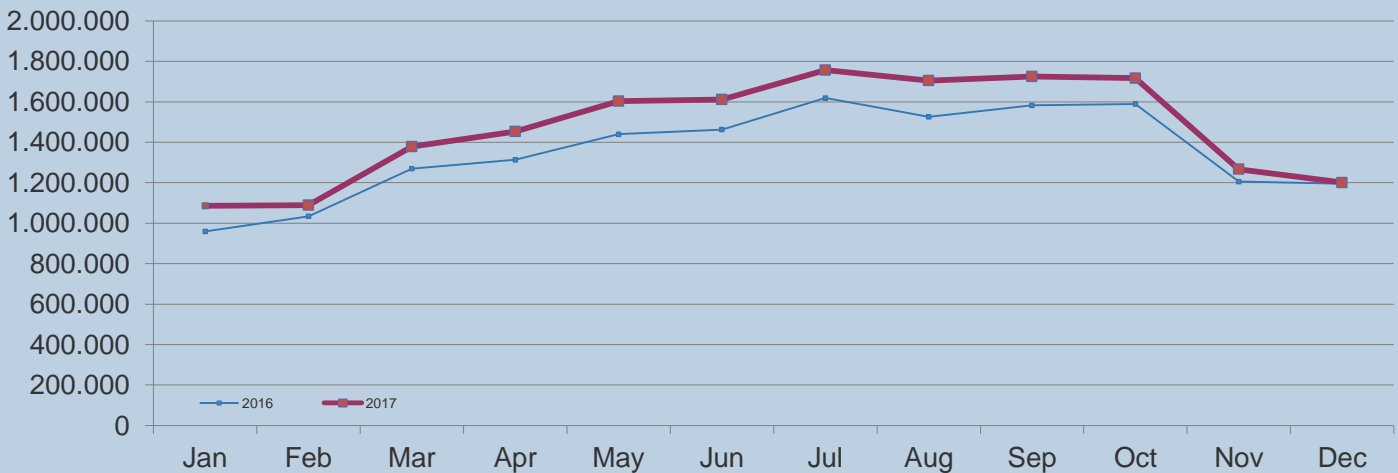
# Traffic Statistics – December 2017



hamburg-airport.de

	December			January - December			12 months to date
	2017	2016	% change	2017	2016	% change	%
<b>Passengers</b>							
Volume	<b>1.200.649</b>	<b>1.194.544</b>	+ 0,5	<b>17.592.278</b>	<b>16.194.176</b>	+ 8,6	+ 8,6
<b>Aircraft movements</b>							
Commercial traffic	<b>10.099</b>	<b>10.846</b>	- 6,9	<b>146.024</b>	<b>145.265</b>	+ 0,5	+ 0,5

## Passengers



## Aircraft movements

